

Hertfordshire Minerals and Waste Local Plan 2040

Draft Plan Policies Map

Hertfordshire County Council



July 2022

For information about this document please contact:

Minerals and Waste Planning Policy
Spatial Planning Unit
Hertfordshire County Council
Tel: +(44) 01992 556227
Email: MineralsandWaste@hertfordshire.gov.uk
hertfordshire.gov.uk/mwlp

Spatial Planning Unit CHN216
Hertfordshire County Council
County Hall
Hertford
SG13 8DN

If you require assistance interpreting or translating this document, please contact
0300 123 4040.

Hertfordshire Minerals and Waste Local Plan 2022

This document is the Draft Policies Map which accompanies the Hertfordshire Draft Minerals and Waste Local Plan (July 2022).

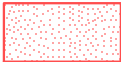
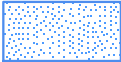
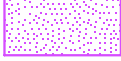






The document comprises an Overview Map of the county, with 16 individual Grid Maps. The Overview Map shows the layout of the grid, with the letters corresponding to the individual Grid Maps. Mineral Allocation Sites (MAS) are shown on separate Inset Maps.

The Grid Maps and Inset Maps show the spatial policies contained within the Plan. Waste Management Sites (WMS) and Water Recycling Sites (WRS) are numbered. A table at the end of the document lists all of these sites, along with their corresponding number and Grid Map letter.

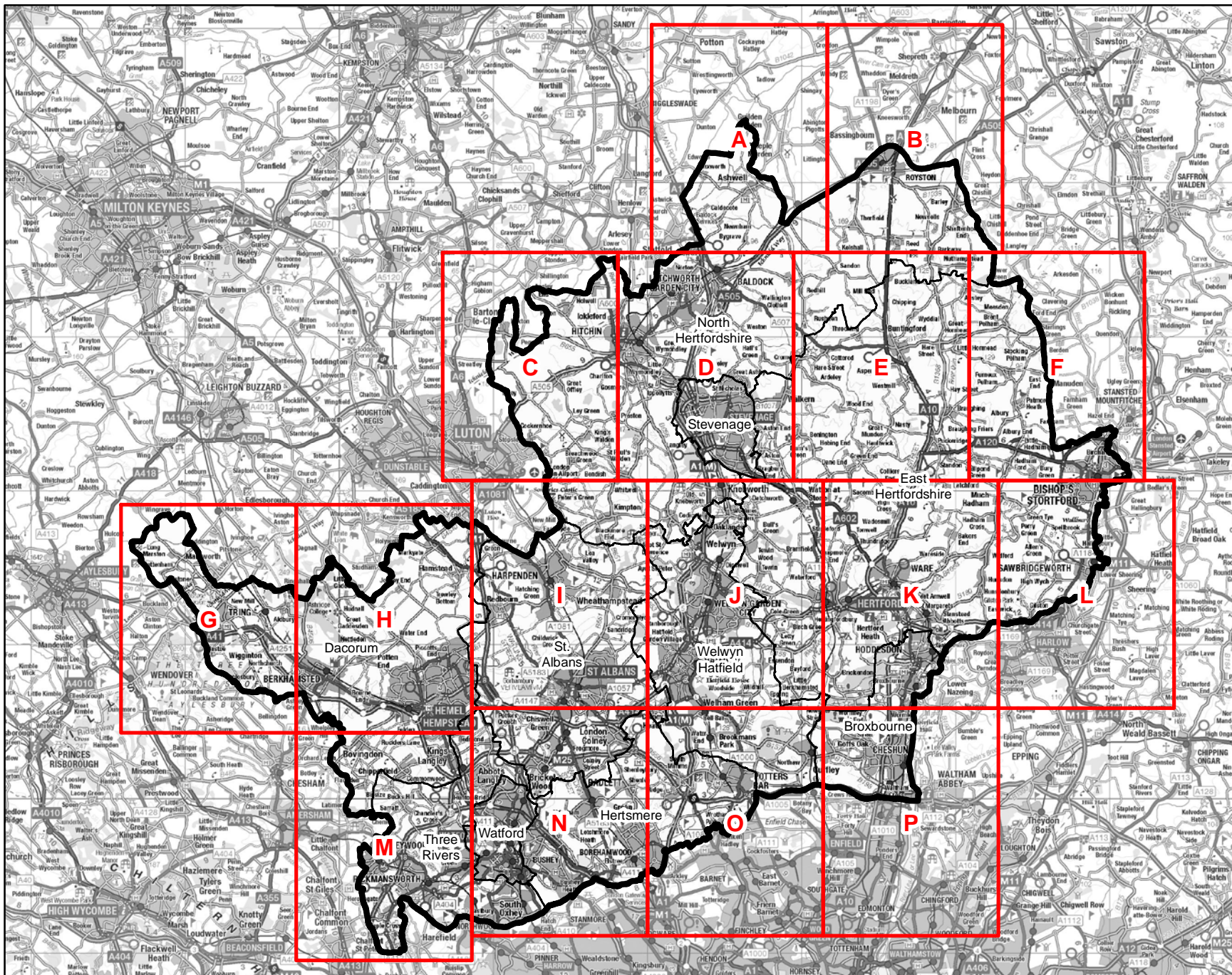
The Policies Map for the plan area is comprised of a set of Policies Maps produced and updated by each of the District and Borough councils within the county. Each Policies Map shows the spatial policies in the adopted Plan(s) applicable in that authority area, including the District or Borough Local Plan(s), the Minerals and Waste Local Plan, and any Neighbourhood Plans.

Following adoption of the Minerals and Waste Local Plan, all of the minerals and waste policies shown on the District and Borough Policies Maps, will be replaced with those contained within this Draft Policies Map.

Legend

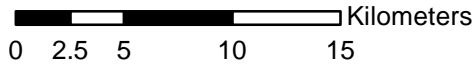
-  Waste Management Site (WMS)
-  Water Recycling Site (WRS)
-  Transport Infrastructure Site (TIS)
-  Minerals Development Site (MDS)
-  Minerals Allocation Site (MAS)
-  Site Consultation Area (SCA)
-  Minerals Safeguarding Area (MSA) Brick Clay
-  Minerals Safeguarding Area (MSA) Sand and Gravel
-  Plan Area Boundary

Overview Map



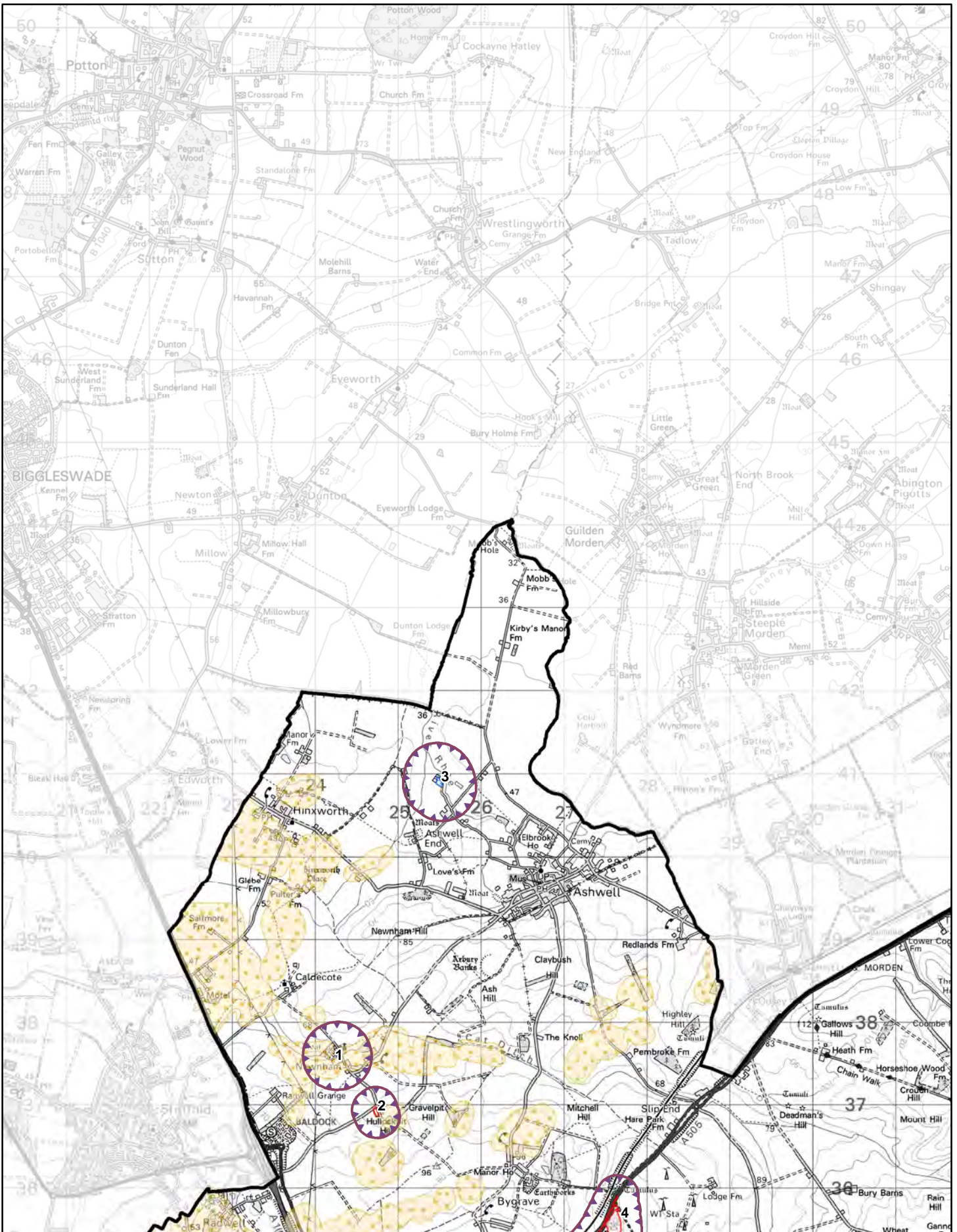
Legend

- Grid Maps
- Plan Area Boundary
- District and Borough Boundaries



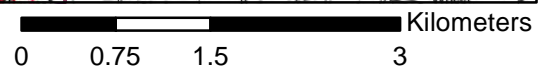
© Crown copyright and database rights 2022 OS EUL 100019606. You are permitted to use this data solely to enable you to respond to, or interact with, the organisation that provided you with the data. You are not permitted to copy, sub-licence, distribute or sell any of this data to third parties in any form.

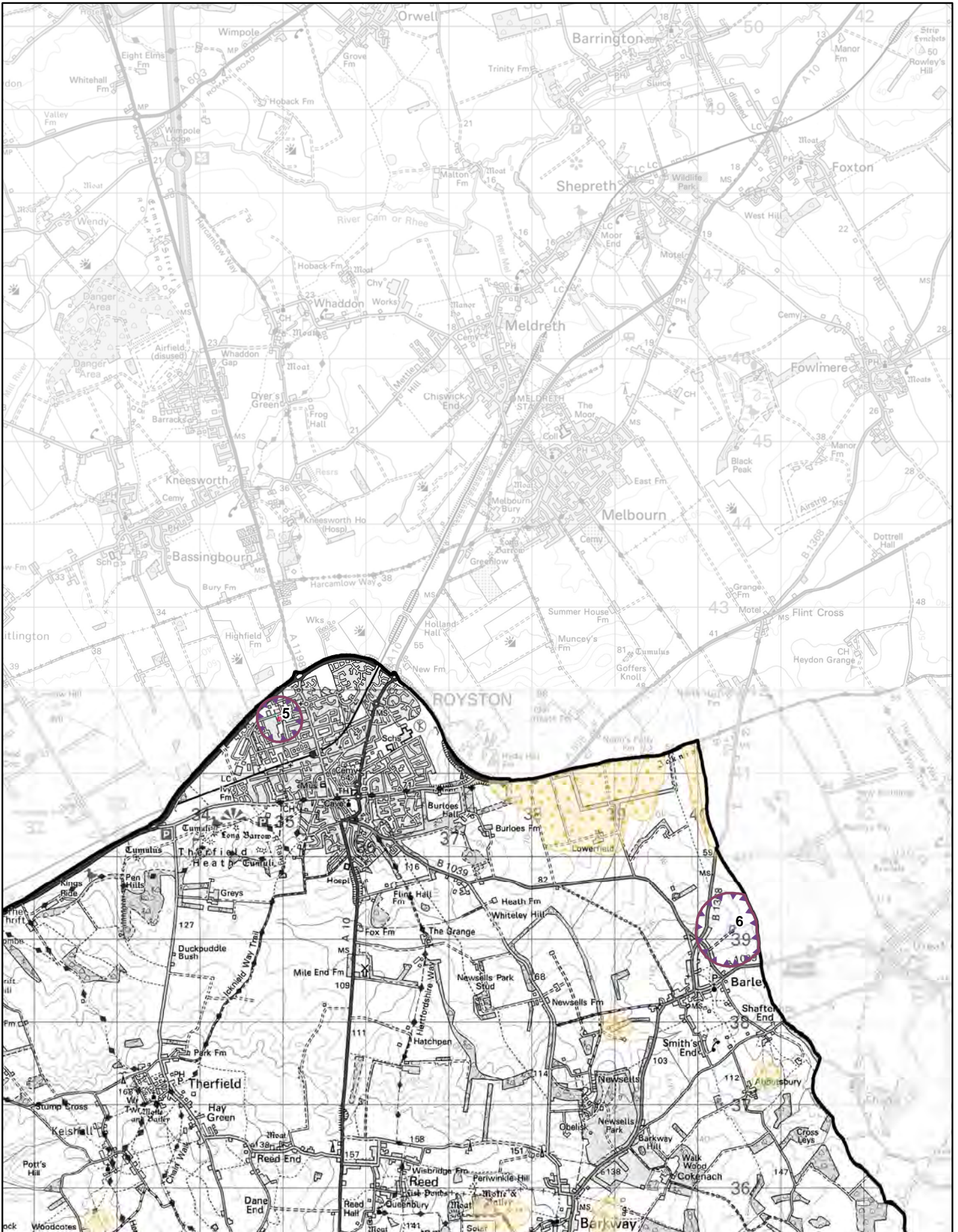
Scale: 1:350,000



Grid Map:A

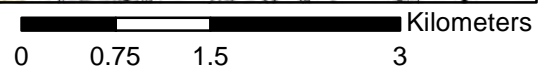
Scale: 1:60,000

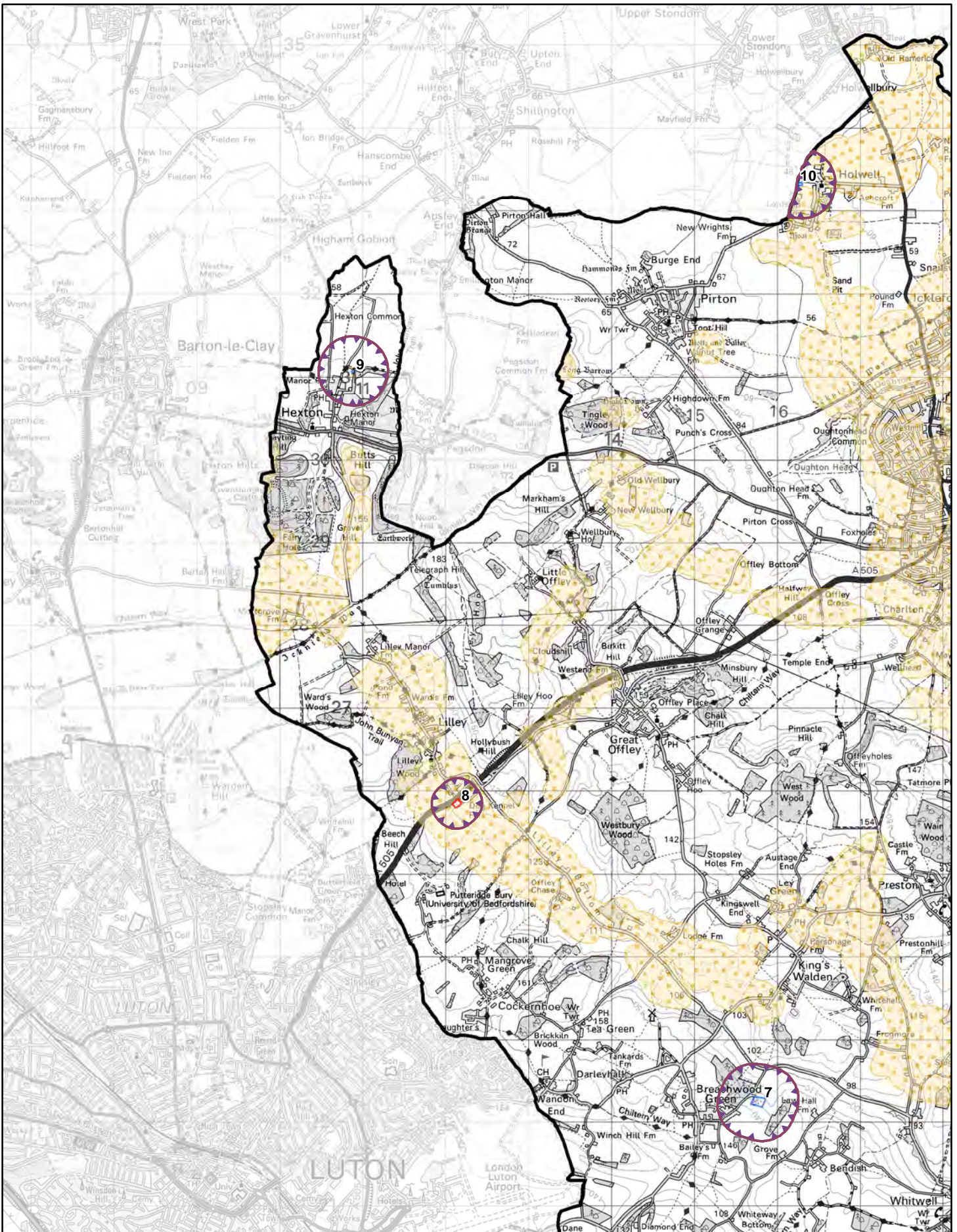




Grid Map: B

Scale: 1:60,000

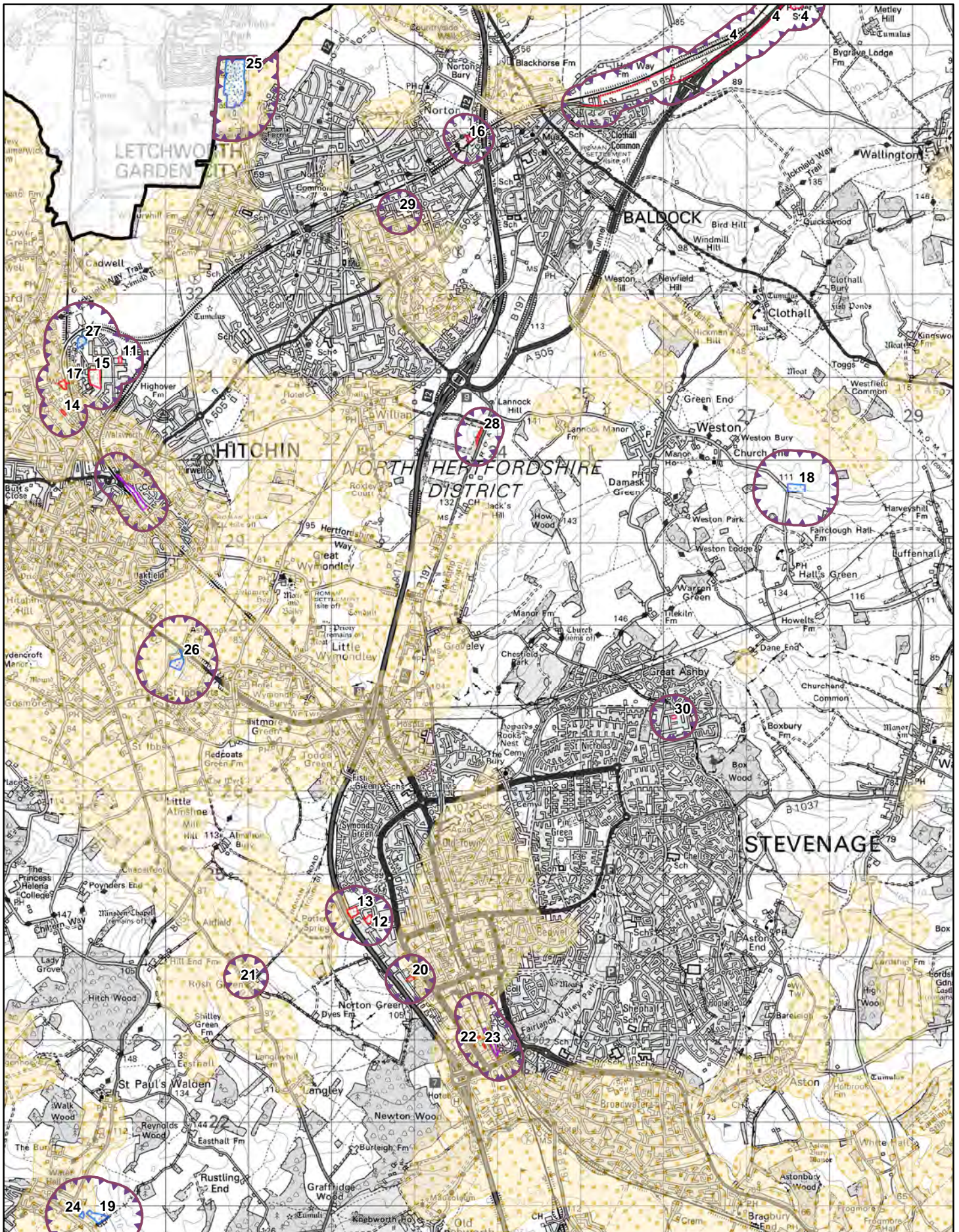




Grid Map:C

Scale: 1:60,000



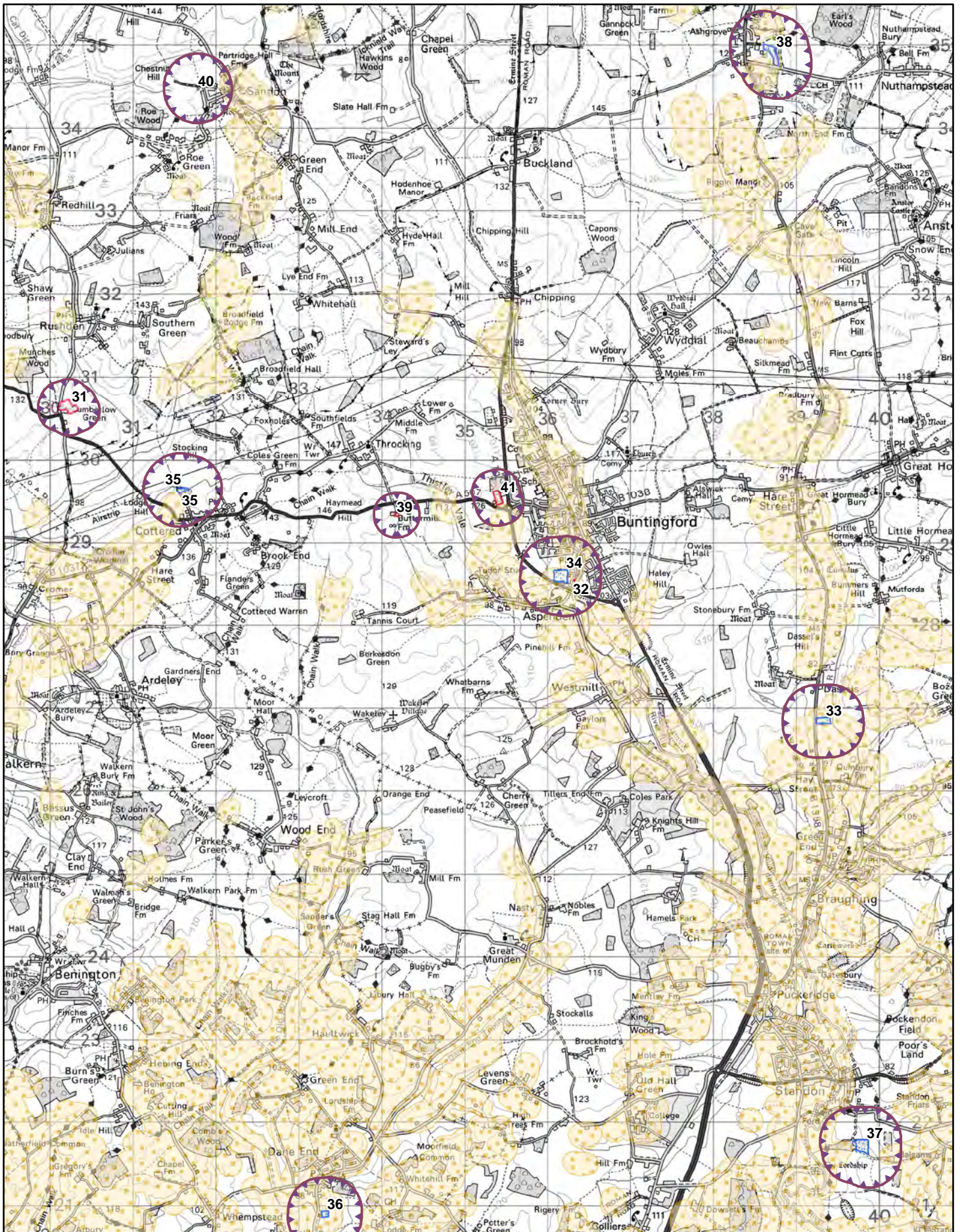


Grid Map:D
Scale: 1:60,000



© Crown copyright and database rights 2022 OS EUL 100019606. You are permitted to use this data solely to enable you to respond to, or interact with, the organisation that provided you with the data. You are not permitted to copy, sub-licence, distribute or sell any of this data to third parties in any form. Derived from 50k scale BGS Digital Data under Licence 2000/035 British Geological Society. (c) NERC

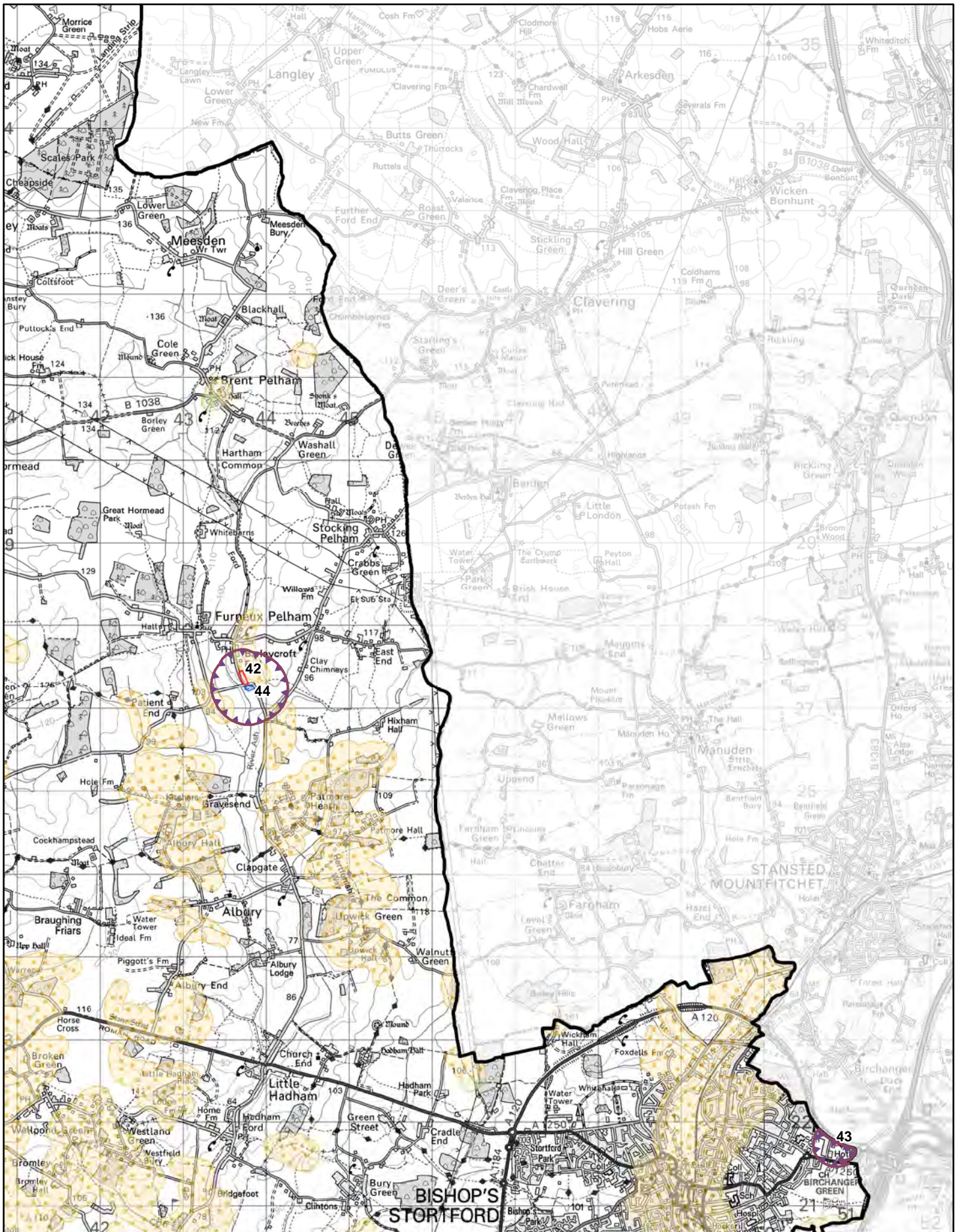




Grid Map: E

Scale: 1:60,000

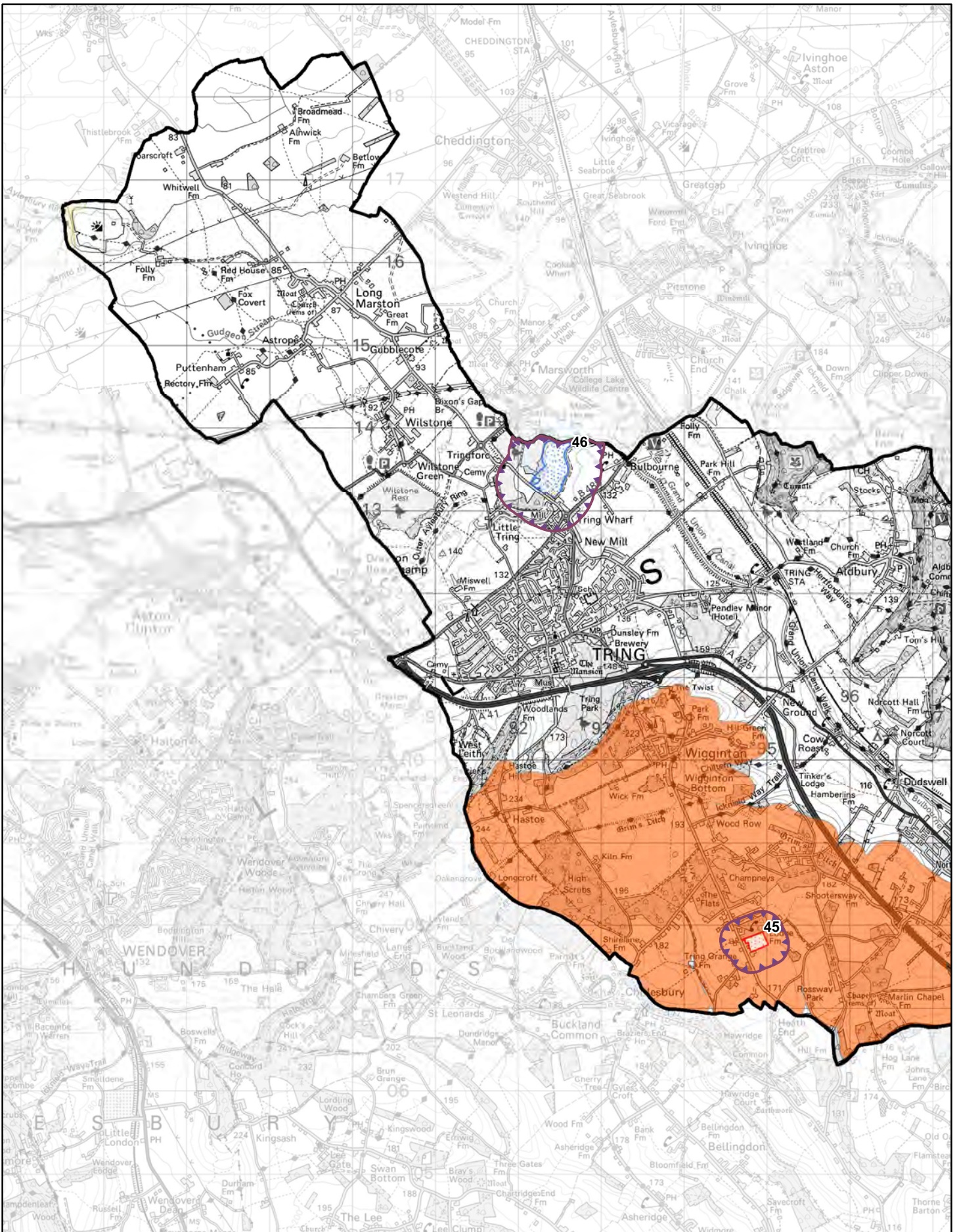




Grid Map:F

Scale: 1:60,000

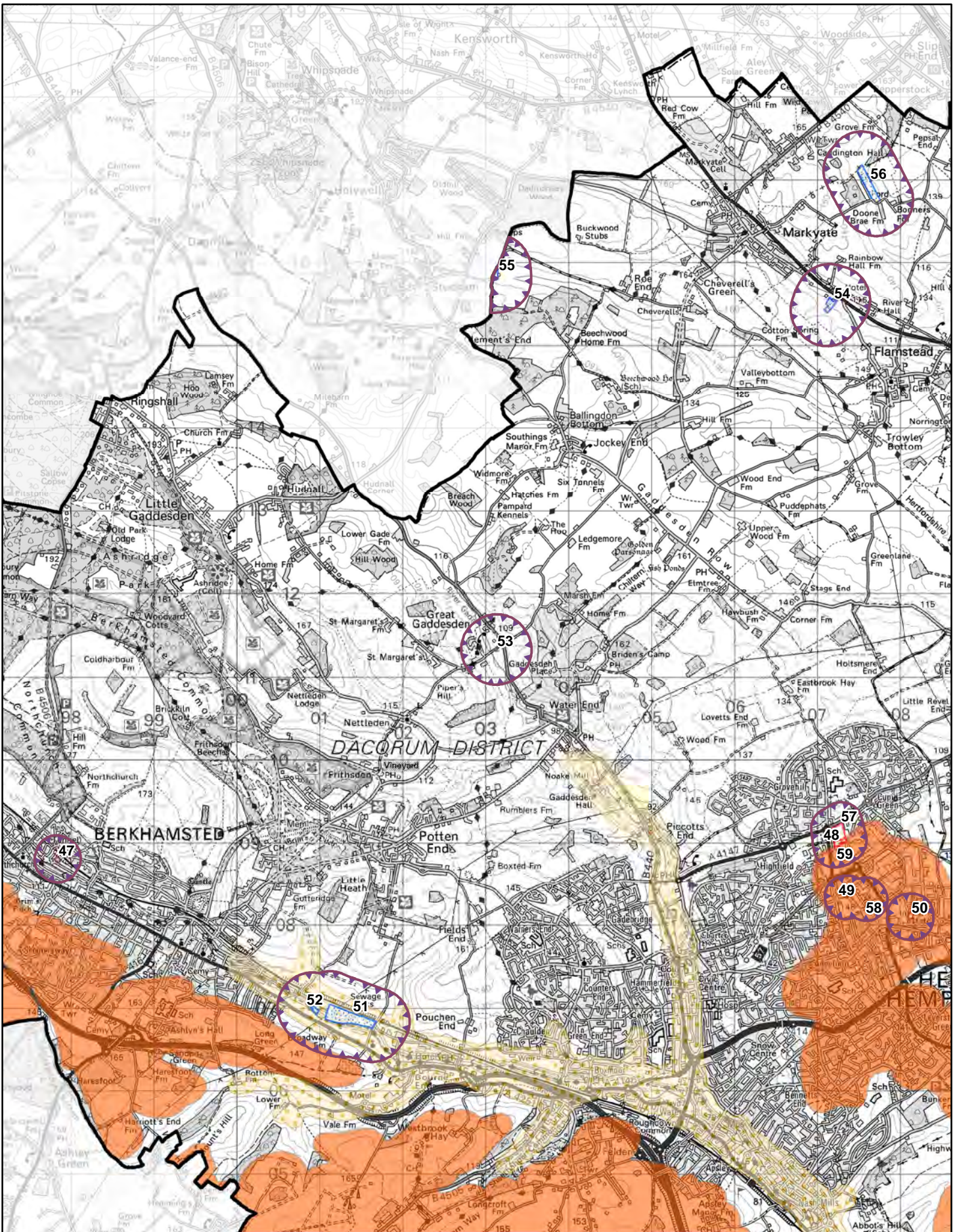




Grid Map:G

Scale: 1:60,000

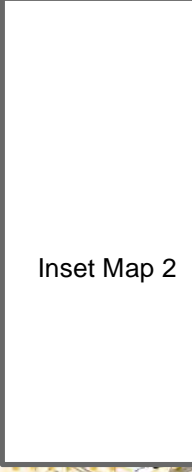
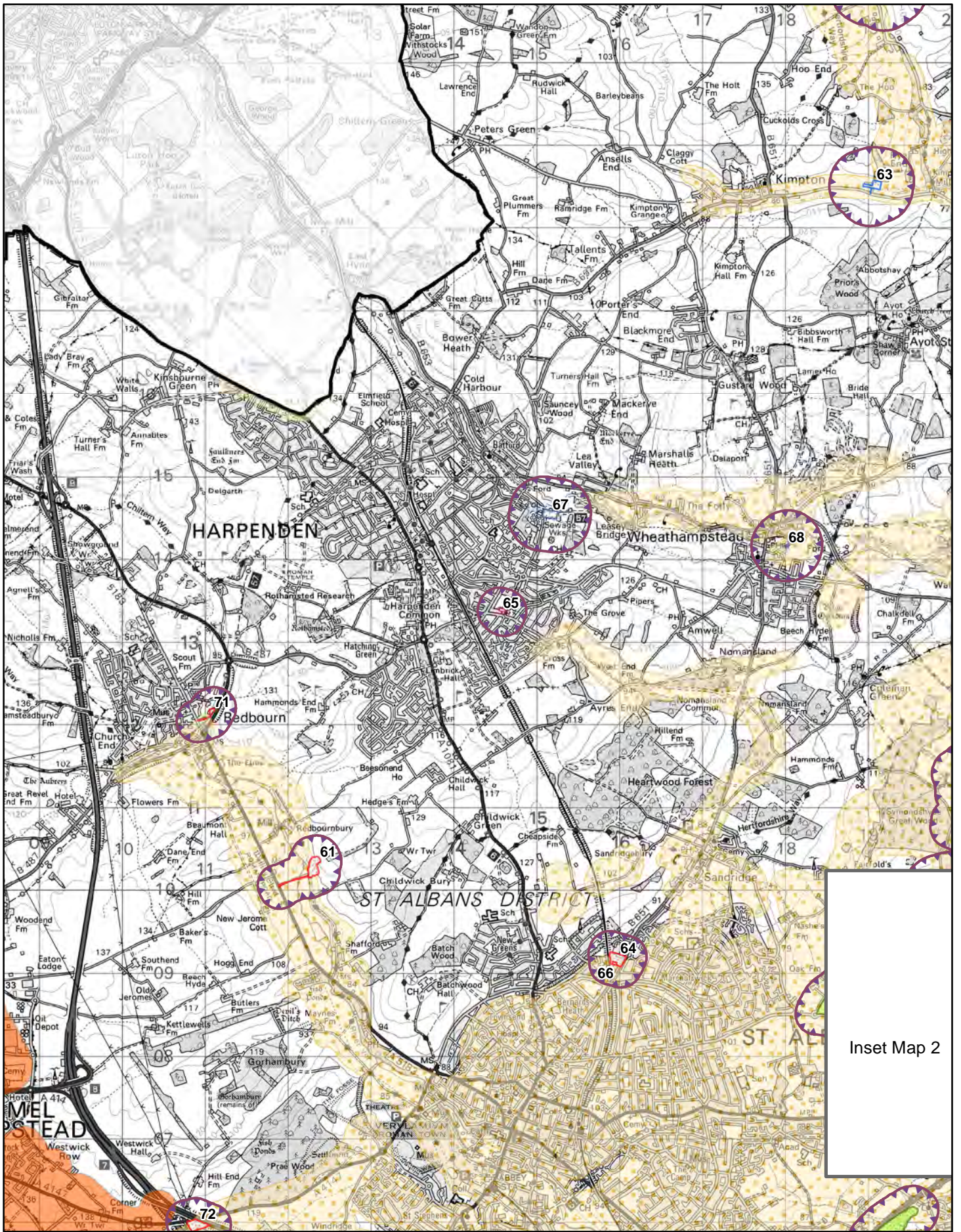




Grid Map:H

Scale: 1:60,000



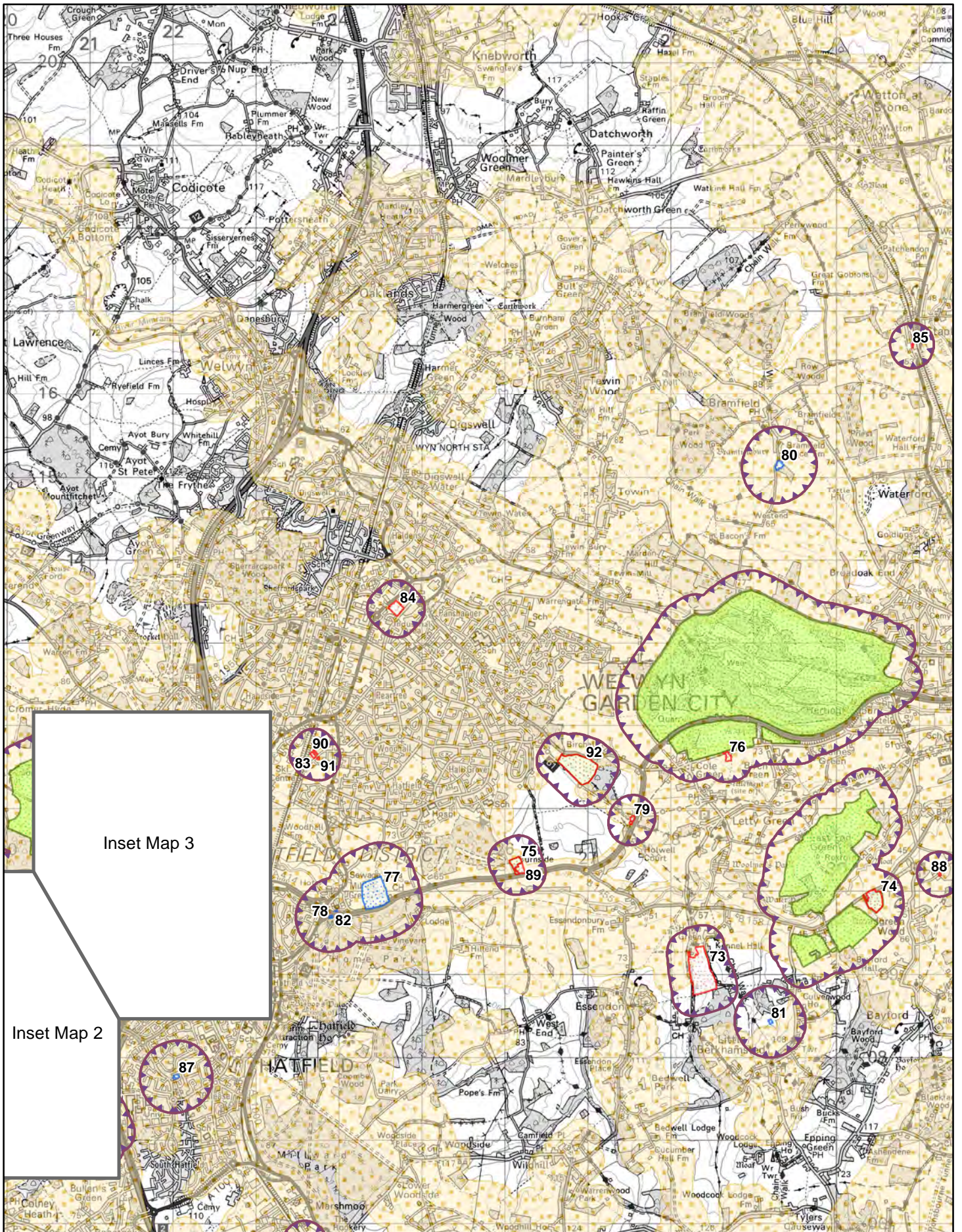


Grid Map: I
Scale: 1:60,000



© Crown copyright and database rights 2022 OS EUL 100019606. You are permitted to use this data solely to enable you to respond to, or interact with, the organisation that provided you with the data. You are not permitted to copy, sub-licence, distribute or sell any of this data to third parties in any form. Derived from 50k scale BGS Digital Data under Licence 2000/035 British Geological Society. (c) NERC

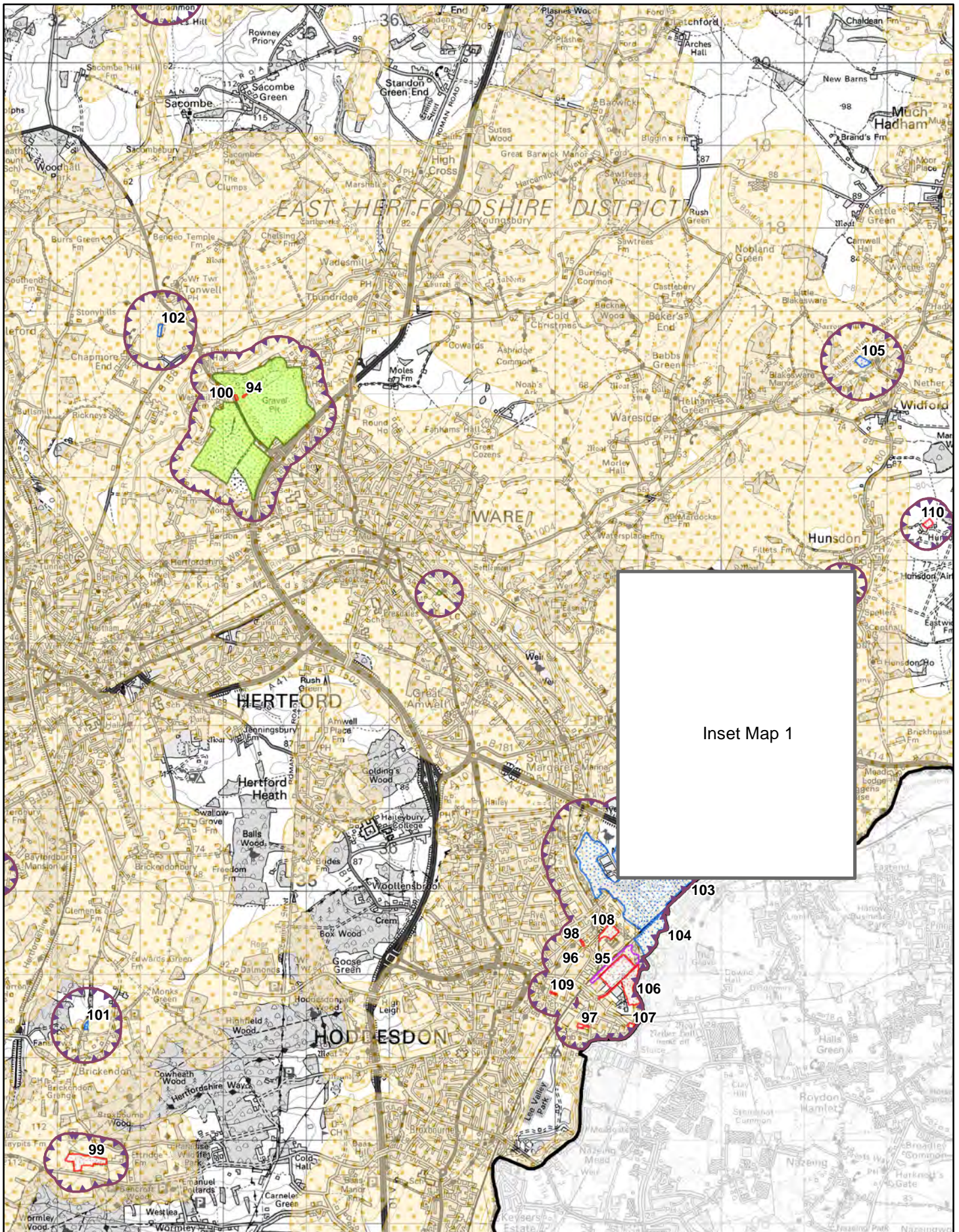




Grid Map: J

Scale: 1:60,000

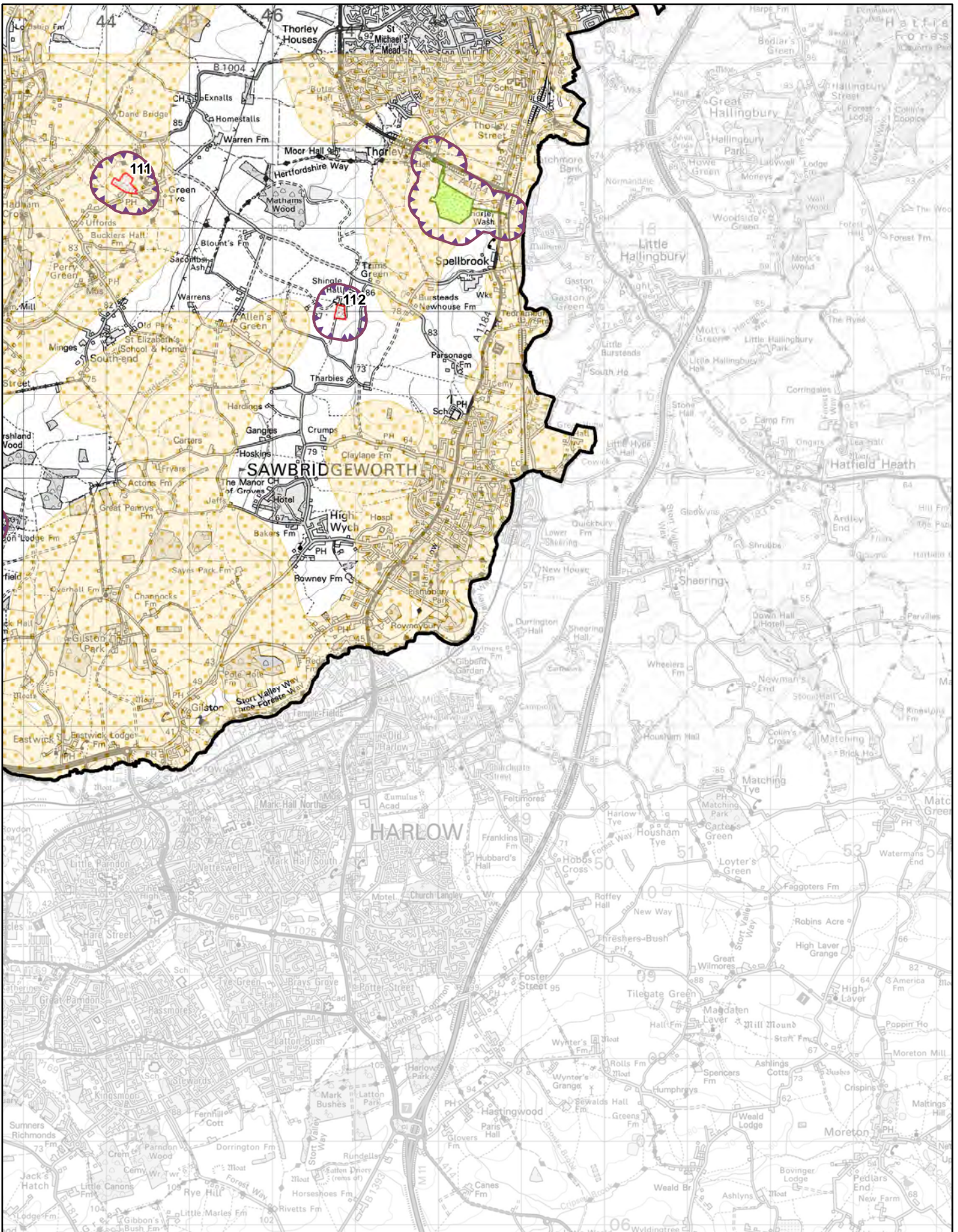




Grid Map:K

Scale: 1:60,000

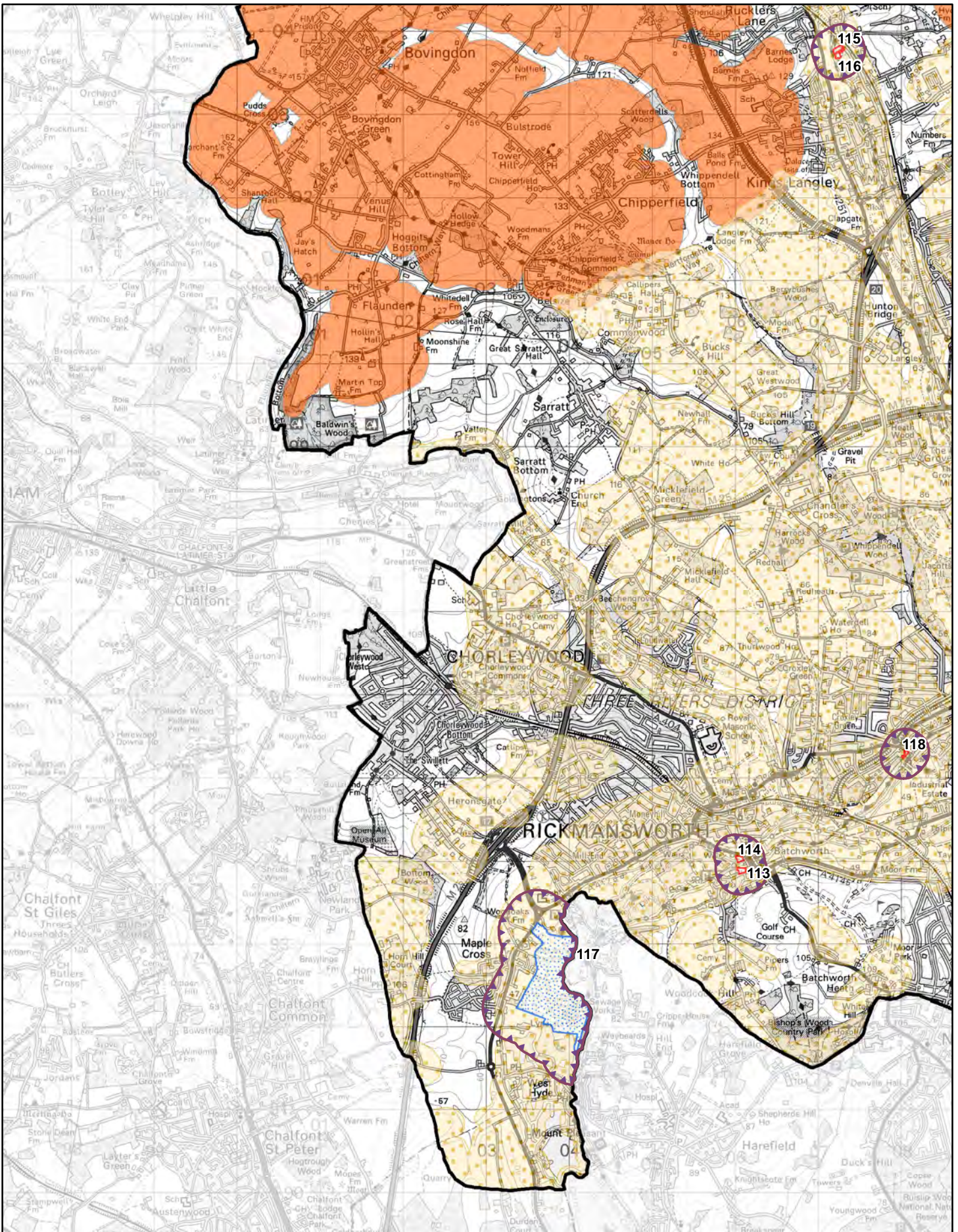




Grid Map:L

Scale: 1:60,000

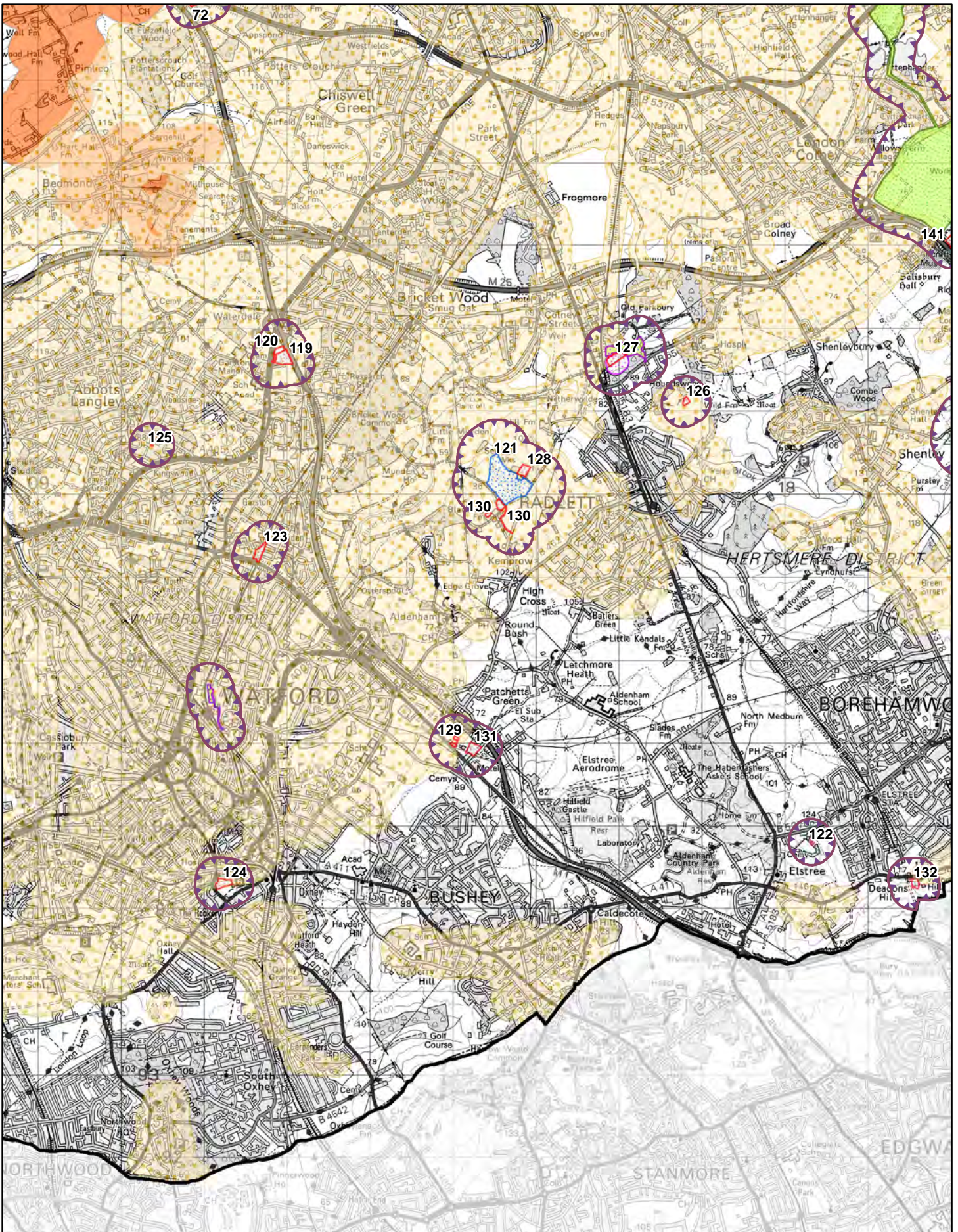




Grid Map:M

Scale: 1:60,000

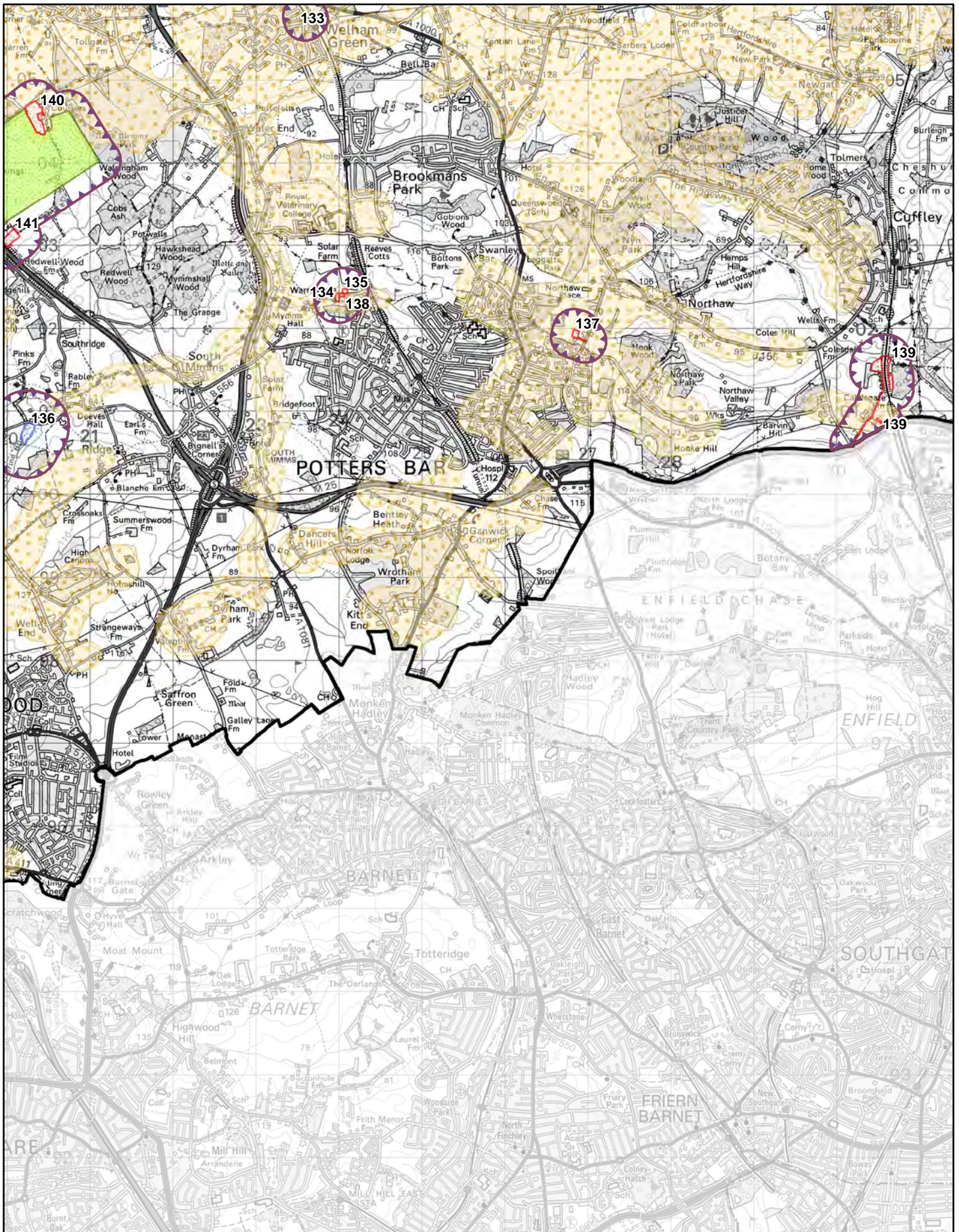
0 0.75 1.5 3 Kilometers



Grid Map:N

Scale: 1:60,000

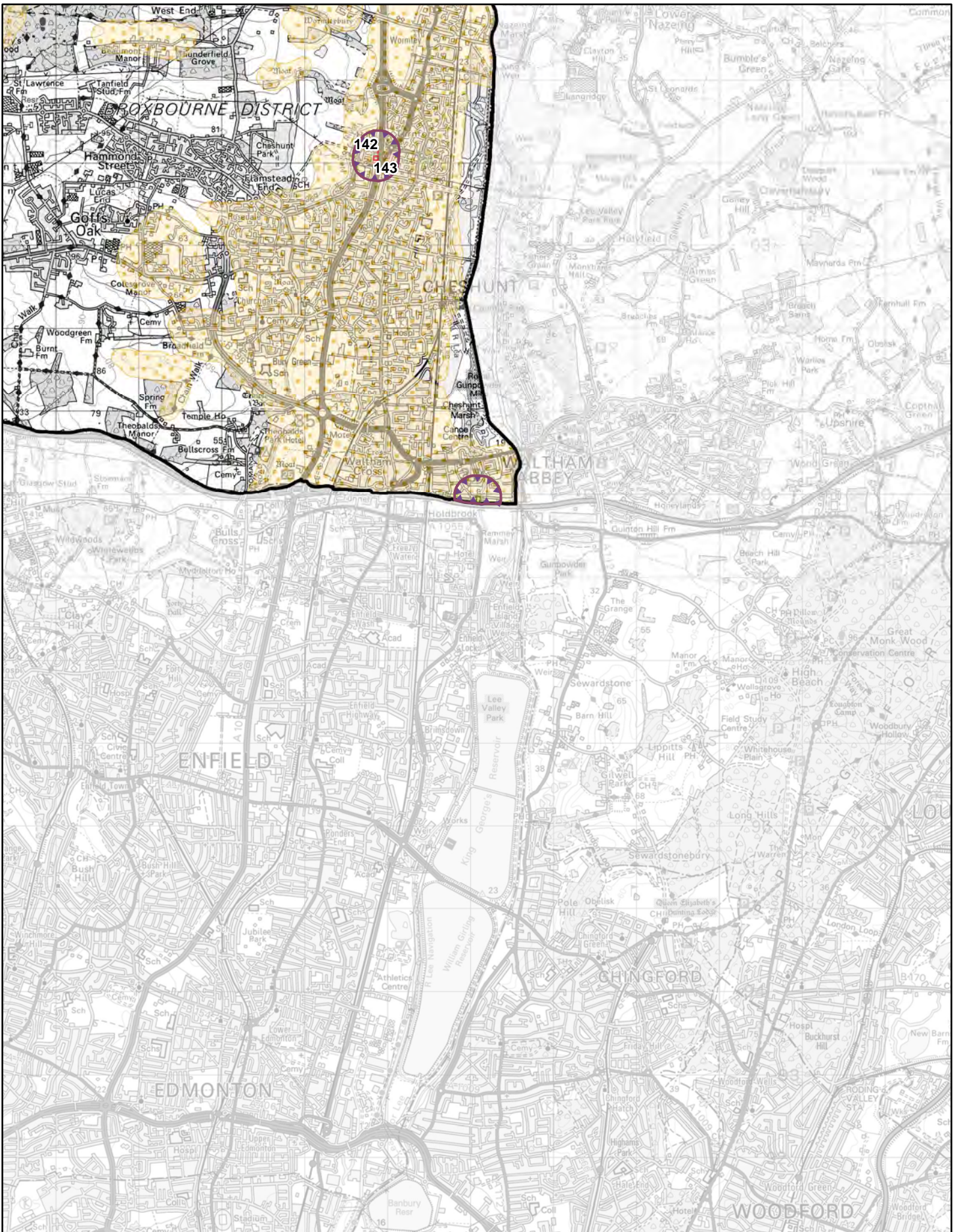




Grid Map: O

Scale: 1:60,000





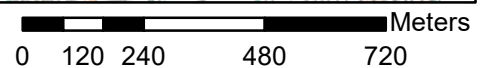
Grid Map:P

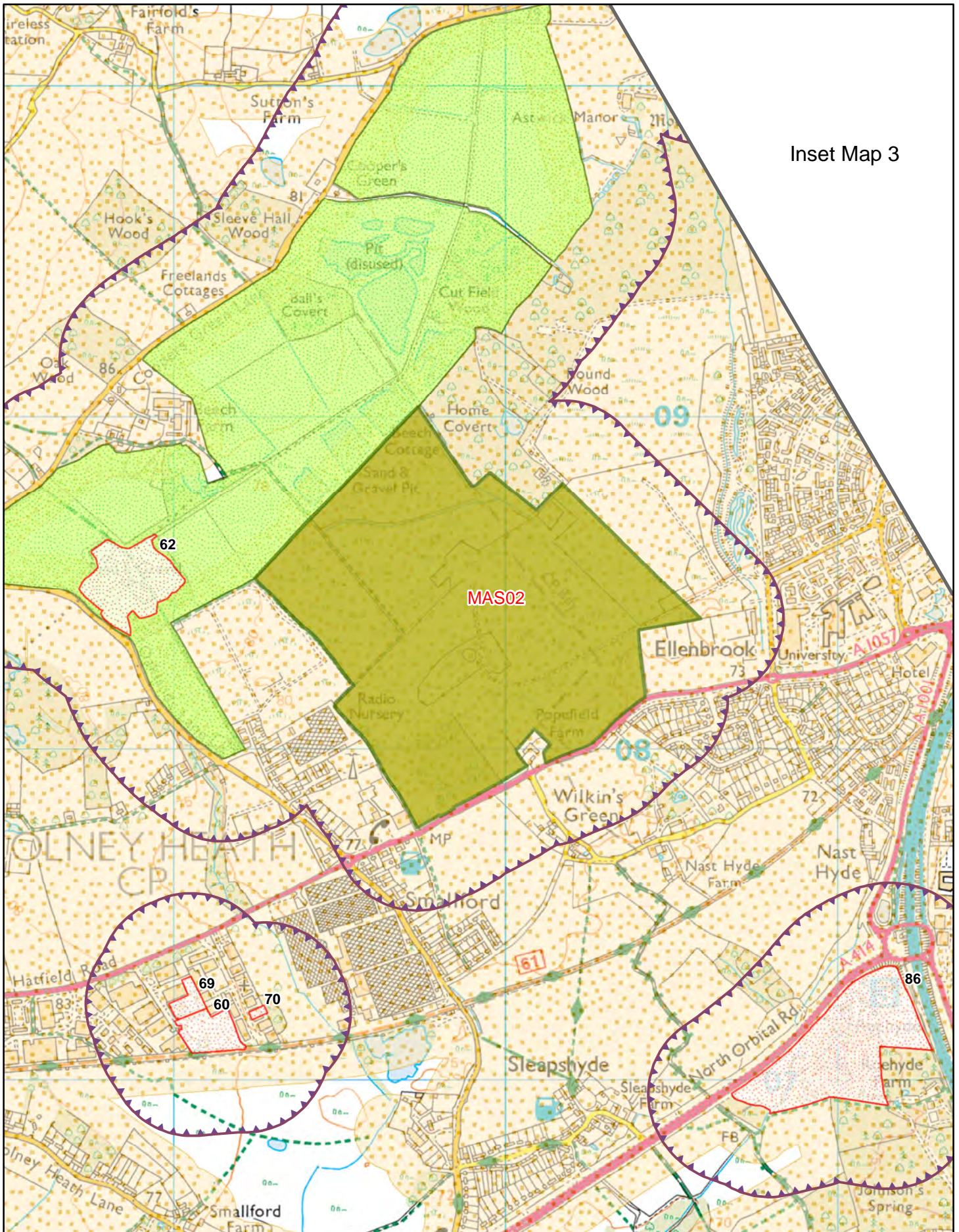
Scale: 1:60,000





Inset Map 1
MAS 01: The Briggens Estate
 Scale: 1:15,000

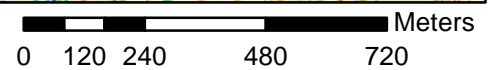


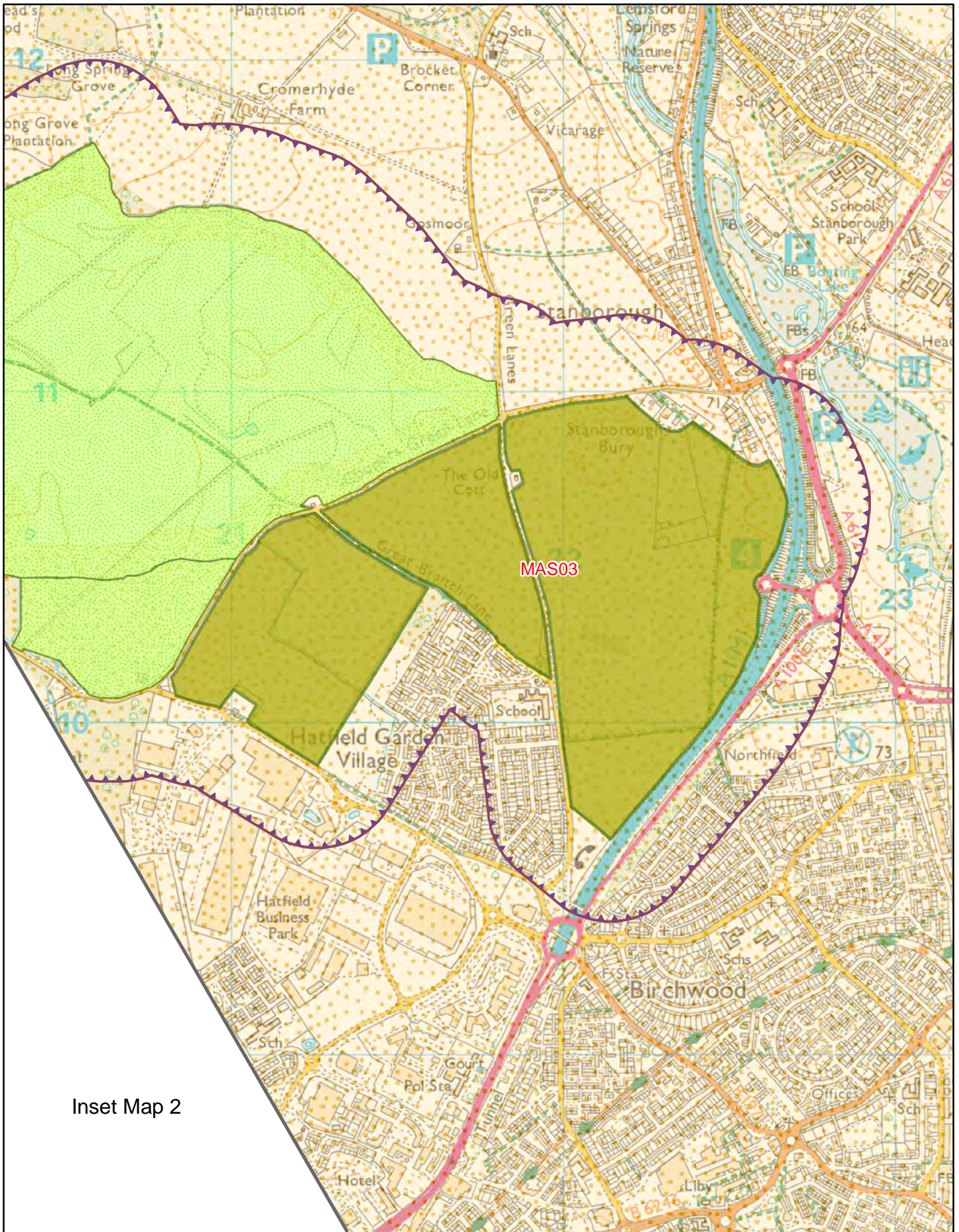


Inset Map 3



Inset Map 2
MAS02: Hatfield Aerodrome
 Scale: 1:15,000





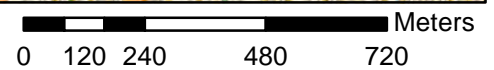
Inset Map 2



Inset Map 3

MAS03: Land Adjoining Coopers Green Lane

Scale: 1:15,000



Site Name	Site Label	Grid Map
Newnham WRS	1	A
Eagles	2	A
Ashwell WRS	3	A
Bygrave Lodge Farm	4	A
Royston RC	5	B
Barley WRS	6	B
Breachwood Green WRS	7	C
TOC Recycling Ltd	8	C
Hexton WRS	9	C
Holwell WRS	10	C
Hunting Gate	11	D
Alchemy Metals Ltd	12	D
Cavendish Road CD	13	D
Goodwins Yard	14	D
H Williams & Son Ltd	15	D
Letchworth RC	16	D
SB Wheeler & Sons Ltd	17	D
Westone WRS	18	D
Whitwell WRS A	19	D
Stevenage RC	20	D
Rush Green Motors	21	D
Leyden Road	22	D
102 Leyden Road	23	D
Whitwell WRS B	24	D
Letchworth WRS	25	D
Ashbrook WRS	26	D
Hitchin Sludge Treatment	27	D
North Graveley	28	D
Woodside	29	D
Ultratec House	30	D
Cumberlow Green Farm	31	E
Buntingford RC	32	E
Braughing WRS	33	E
Buntingford WRS	34	E
Cottered WRS	35	E
Dane End WRS	36	E
Standon WRS	37	E
Barkway WRS	38	E
Buttermilk Hall Farm	39	E

Site Name	Site Label	Grid Map
Sandon WRS	40	E
Buntingford Depot	41	E
Barley Croft Works	42	F
Bishop's Stortford RC	43	F
Ferneux Pelham WRS	44	F
Lodge Way	45	G
Tring WRS	46	G
Berkhamstead RC	47	H
Hemel Hempsted RC	48	H
Mark Road	49	H
Maxted Close	50	H
Berkhamsted WRS A	51	H
Berkhamsted WRS B	52	H
Great Gaddesden WRS	53	H
Markyate WRS	54	H
Studham WRS	55	H
Caddington WRS	56	H
Cupid Green CD	57	H
Matrians Recycling	58	H
M Hunt Carbreakers	59	H
Pearce House	60	I
Redbournbury Special Waste	61	I
Hatfield Leachate Plant	62	I
Kimpton WRS	63	I
St Albans CD	64	I
Harpenden RC	65	I
St Albans RC	66	I
Harpenden WRS	67	I
Wheathampstead WRS	68	I
Depot Acrewood Way	69	I
Blancomet	70	I
Old Station Yard	71	I
Appspond Lane	72	I
Bedwell Park Quarry	73	J
Lower Hatfield Road	74	J
Burnside A	75	J
Cole Green Service Station	76	J
Hatfield WRS A	77	J
Hatfield WRS B	78	J

Site Name	Site Label	Grid Map
Cole Green RC	79	J
Bramfield WRS	80	J
Little Berkhamsted WRS	81	J
Mill Green WRS	82	J
34 Burrowfield	83	J
Tewin Road Depot	84	J
Maguire Yard	85	J
Ryders Corner	86	J
Hatfield Pumping Station	87	J
Home Farm	88	J
Burnside B	89	J
30 Burrowfield	90	J
31 Burrowfield	91	J
Birchall Lane	92	J
Hunsdon Skip hire	93	K
Westmill Biffa Services	94	K
Ratty's Lane ATT	95	K
AFFVUK Ltd	96	K
Essex Road	97	K
Hoddesdon RC	98	K
AH Nicholls & Sons Ltd	99	K
Ware RC	100	K
Brickendon WRS	101	K
Chapmore End WRS	102	K
Rye Meads WRS North	103	K
Rye Meads WRS South	104	K
Widford WRS	105	K
Ratty's Lane AD	106	K
G&C Recycling	107	K
Robert Gibbs Co.	108	K
Global House	109	K
Hunsdon Airfield	110	K

Site Name	Site Label	Grid Map
Green Tye Nurseries	111	L
Carmageddon Salvage	112	L
Batchworth CD	113	M
Rickmansworth RC	114	M
Kings Langley Depot	115	M
ASM Recycling	116	M
Maple Lodge WRS	117	M
Croxley Green	118	M
Waterdale WTS	119	N
Waterdale RC	120	N
Blackbirds Lane WRS	121	N
Elstree RC	122	N
Colne Way	123	N
Wiggenhall Road CD	124	N
Sheepcot Lane	125	N
Warren Fields	126	N
Harper Lane	127	N
FMS Recovery	128	N
The Conifers	129	N
Blackbirds Farm	130	N
Sandy Lane	131	N
Woodcock Hill Farm	132	N
Metal Reclamations Ltd	133	O
Unit 24 Cranbourne Road	134	O
Potters Bar RC	135	O
Shenley WRS	136	O
Chas Storer	137	O
Cranbourne Road	138	O
Castlegate Farm	139	O
Coursers Farm AD	140	O
Redwell Wood Farm	141	O
Fairways CD	142	P
Turnford RC	143	P

